

RFP # 07/16/2024 -Tech Center Benavides Club

Beginning Date 07/16/2024

Closing Date 07/31/2024

Request for Tech Center at the Benavides Club building at 500 Moctezuma St., Laredo, Texas

Project Overview

The Boys and Girls Club of Laredo is seeking bids for the remodel and renovation of our current Library to a Technology Center.

Bid documents include the plans, specifications and developed to describe all of the elements of a construction, demolition, and renovation project and become the contract between the BGCL and the selected contractor. The following sections list the applicable federal and state provisions associated with each bidding or contracting component with a brief description of the requirements associated with each.

Project must be met with the included specifications:

Contract will be awarded to vendor based on QUALITY, SPEED, AND AVAILABILITY. \$1,000,000 Liability insurance needed. Potential background check may be needed for contract employees.

Cost:

Proposal must include estimated cost for all work related to this project.

Please contact the Boys and Girls Clubs of Laredo with any questions.

The Boys & Girls Clubs of Laredo reserves the right to cancel this request for services at any time, to elect not to award the work listed, and to reject any or all the responses.

How to Apply

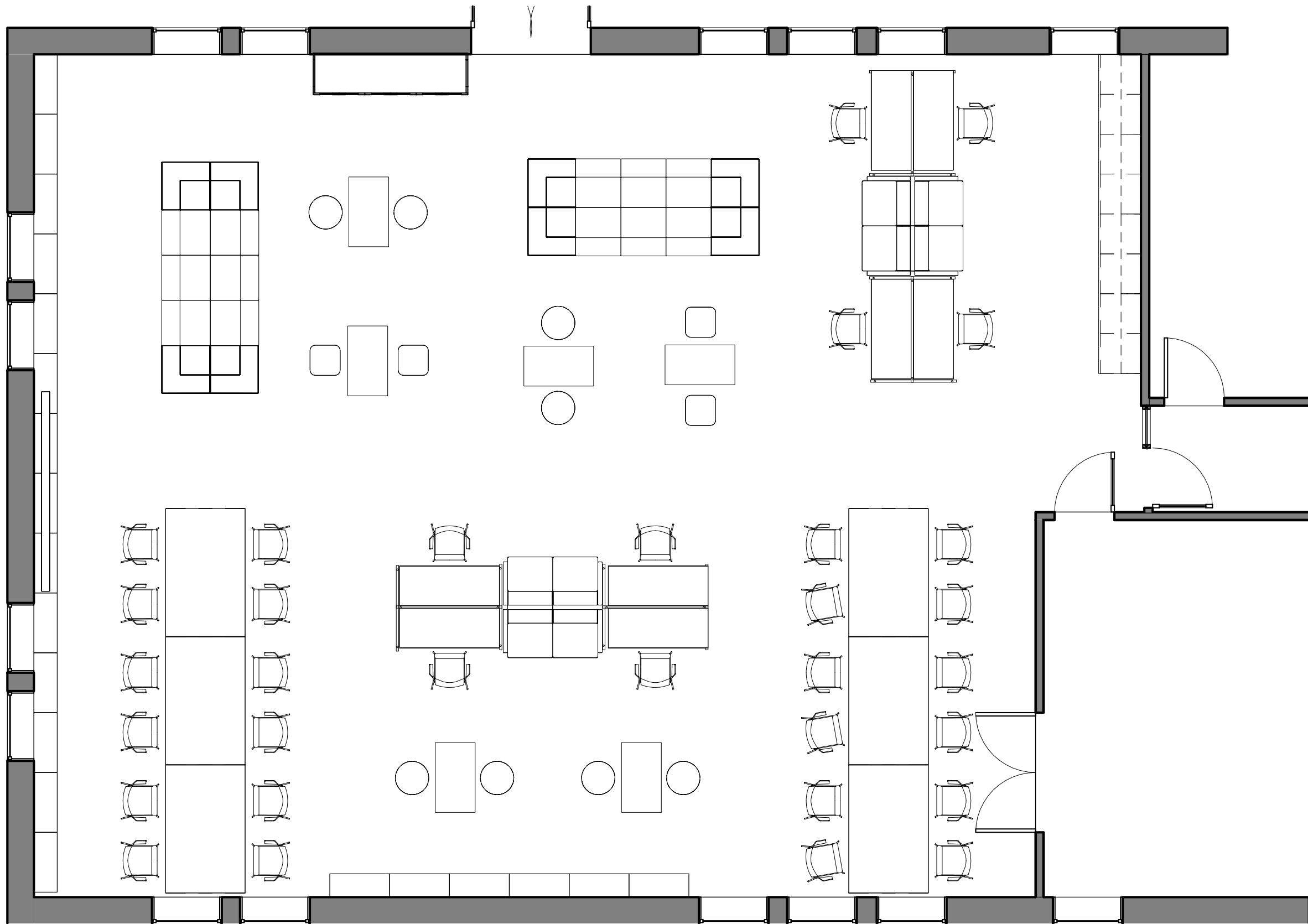
Submit your official estimate along with any supporting materials to bidopportunities@bgclaredo.com. Direct questions to Kevin Lopez (956) 242-4912



BOYS AND GIRLS CLUBS OF LAREDO / Robert M. & Beatriz S. Benavides



BOYS AND GIRLS CLUBS OF LAREDO / Robert M. & Beatriz S. Benavides



1 Level 1
3/16" = 1'-0"



1119 FLORES AVE. STE 200 LAREDO, TEXAS 78040
956.727.5391 WWW.REDLINEARCHITECTURE.COM

BOYS & GIRLS CLUB LAREDO

BENAVIDES

No.	Description	Date

MULTI-PURPOSE ROOM

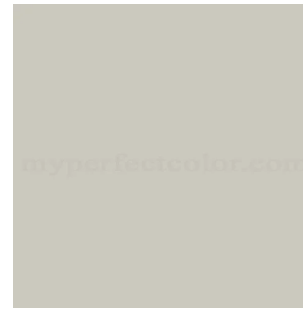
Project number 140424
Date 6-17-24
Drawn by TLM
Checked by JJM

A0.1
Scale 3/16" = 1'-0"

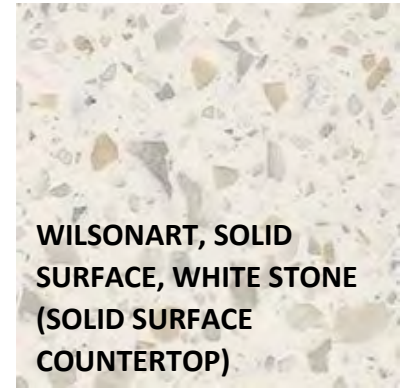
OPTION 1 – GRAY LT/DARK GREEN



**JOHNSONITE, CHARCOAL
(WALL BASE)**



**SW7015 REPOSE
GRAY (BASIC
WALL)**



**WILSONART, SOLID
SURFACE, WHITE STONE
(SOLID SURFACE
COUNTERTOP)**



**OR PATCRAFT MARK MAKING INSTALLED IN HERRINGBONE
(00250, 00370, 00500, 00520, 00580)**



**WILSONART, HANDSPUN
DOVE (LAMINATE
COUNTERTOP)**



**WILSONART, SKYLINE
WALNUT (CABINETS)**





Quantity	Assembly Number	SubContracted Ind.	Description	Unit
2,250.00	C30204109200	S	LVT	S.F.
200.00	C30206000055	S	Resilient base, 1/8" vinyl, 4" H, straight or cove, std. colors	L.F.
200.00	C30206000070	S	Resilient base, 1/8" vinyl corner, 4" H, straight or cove, std. colors	L.F.
16.00	1.2357E+11	S	Casework Base & Wall Cabinets	L.F.
1,125.00	C30301105700	S	Gypsum board ceilings, 5/8" fire rated gypsum board, painted and textured finish, 1-5/8" metal stud furring, 24" OC support	S.F.
1,125.00	C30302105800	S	Acoustic ceilings, 5/8" fiberglass board, 24" x 48" tile, tee grid, suspended support	S.F.
2,250.00	C30102300140	S	Painting, interior on plaster and drywall, walls & ceilings, roller work, primer & 2 coats	S.F.
15.00	D50201250520	S	Receptacle duplex 120 V grounded, 15 A with box, plate, 3/4" EMT & wire	Ea.
2,250.00	D50202951000	S	Lighting on/off control system, 10 fixtures per 1000 SF	S.F.
2,250.00	D50202080680	S	LED Light Fixtures	S.F.
250.00	D50201150200	S	Receptacle systems, underfloor duct, 5' on center, low density	S.F.